

Proposal of a set of reference criteria and indicators for project assessment

STC 4 per 1000 Initiative



Time frame

- **For discussion at the 2nd Consortium meeting**
- **To be adopted at the 3rd Consortium meeting**



The Political Framework Sustainable Development Goals (SDGs)



Direct targets for 4 per 1000 projects

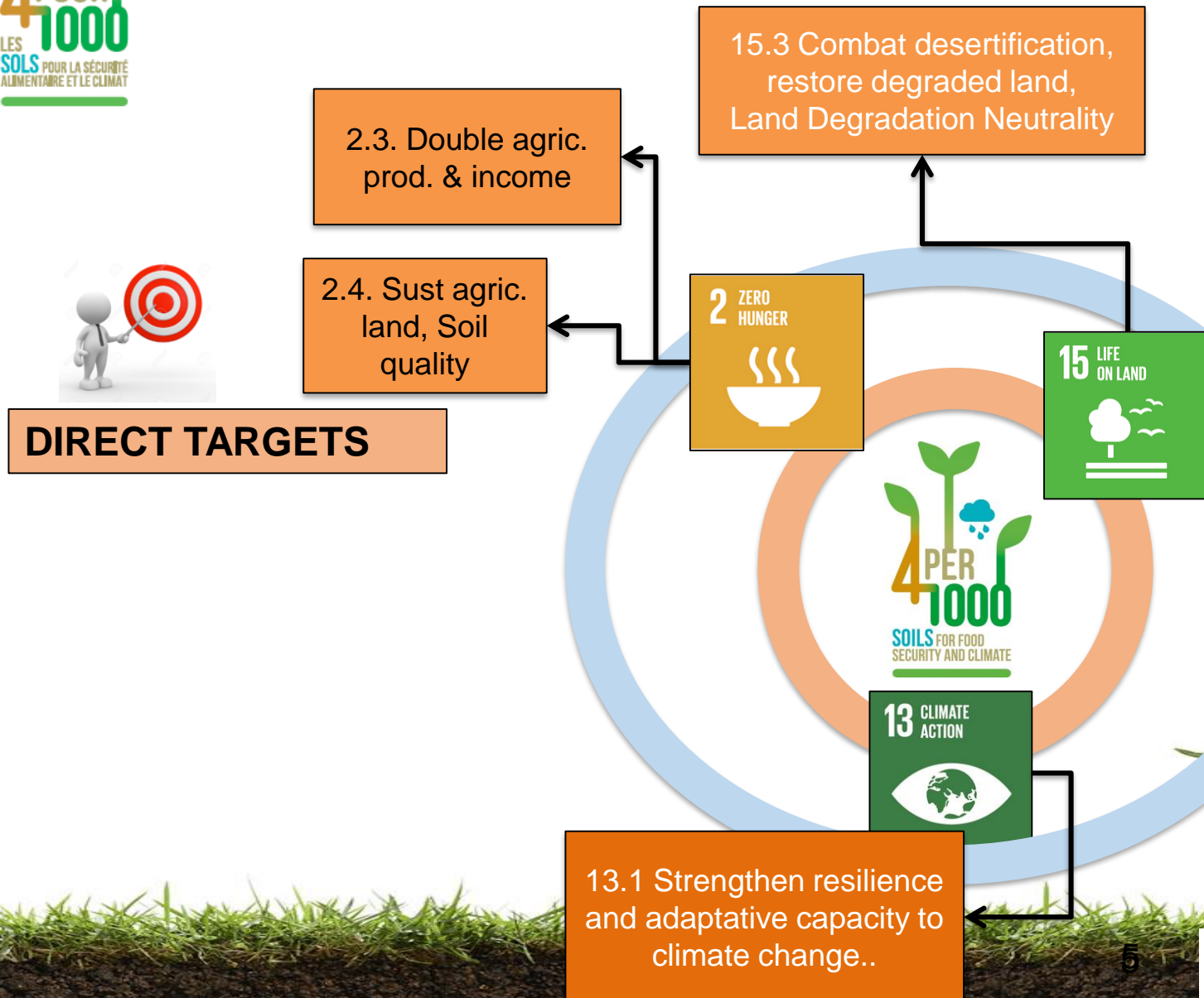


DIRECT TARGETS





Direct SDG targets





Direct and associated SDG targets



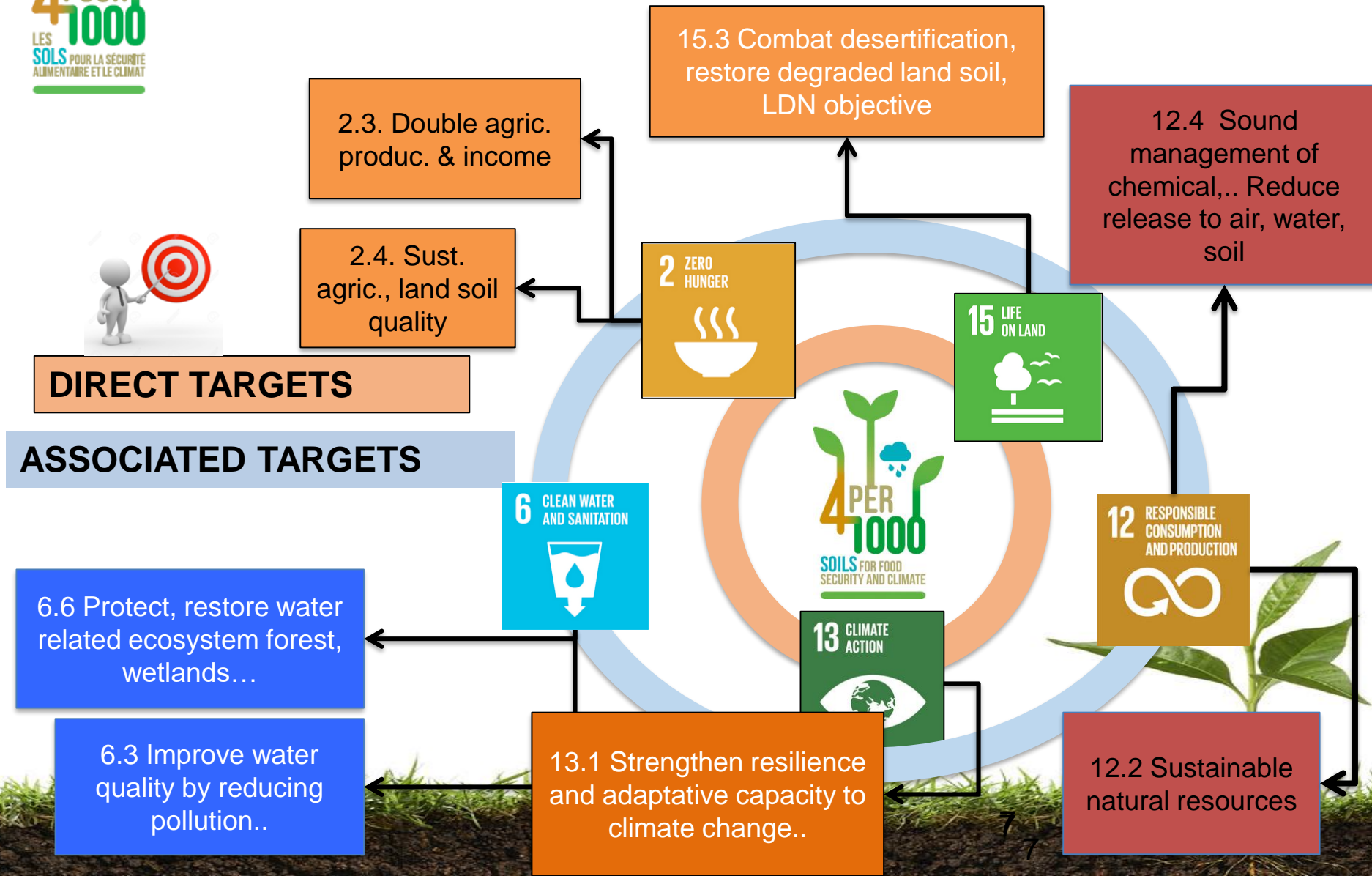
DIRECT TARGETS

ASSOCIATED TARGETS





Direct and associated targets





SDG targets for the 4 per 1000 initiative



DIRECT TARGETS

ASSOCIATED TARGETS



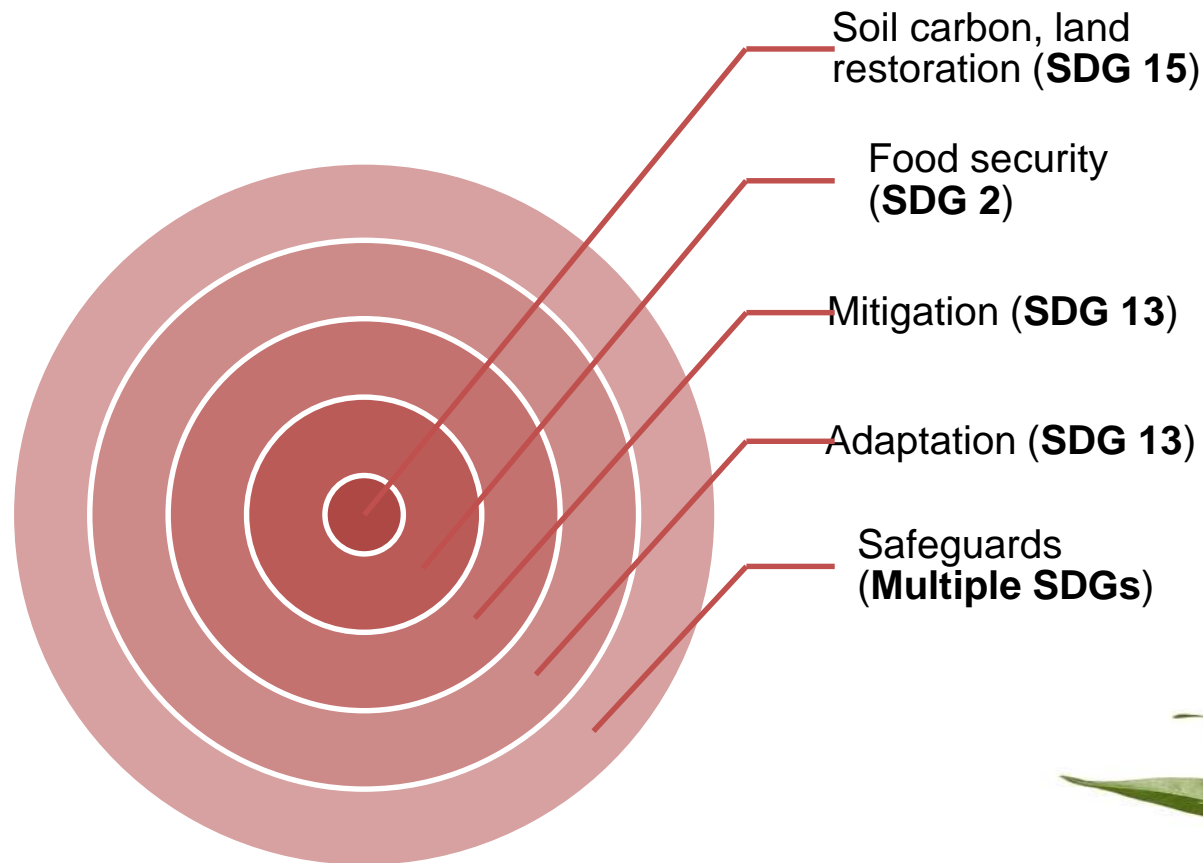
What is a project?

A project should refer to a specific action, under defined temporal and spatial scales and ecosystems (e.g. arable, rangelands, forests, etc.) and to targeted changes in soil carbon. This must be related to land management and/or land use options, as well as expected benefits and possible trade-offs for local communities and could be at different scales.

**Does it contribute to direct and associated
4 per 1000 targets?**



4 per 1000 project criteria and target SDGs



Project criteria and indicators

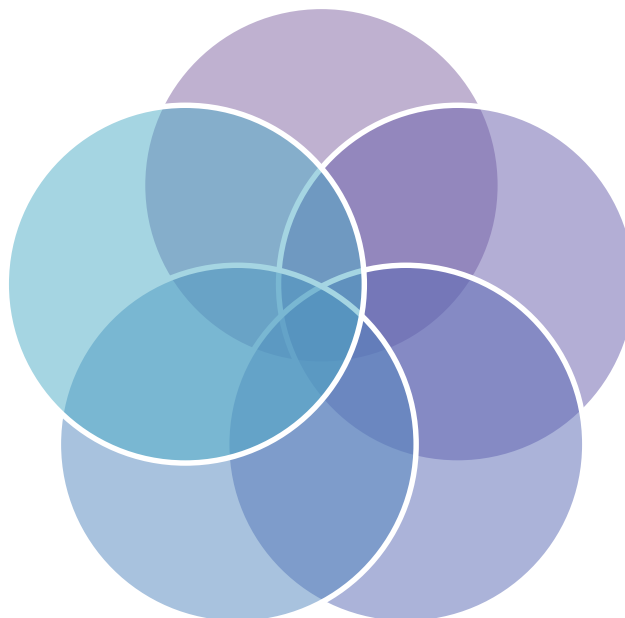
Soil carbon, land restoration
(increased stocks, permanence,
additionality, no leakage, area
under conservation)

Safeguards
(property rights, well
being, capacity
building,
environmental
protection)

Food security (supply,
stability, access,
safety, quality)

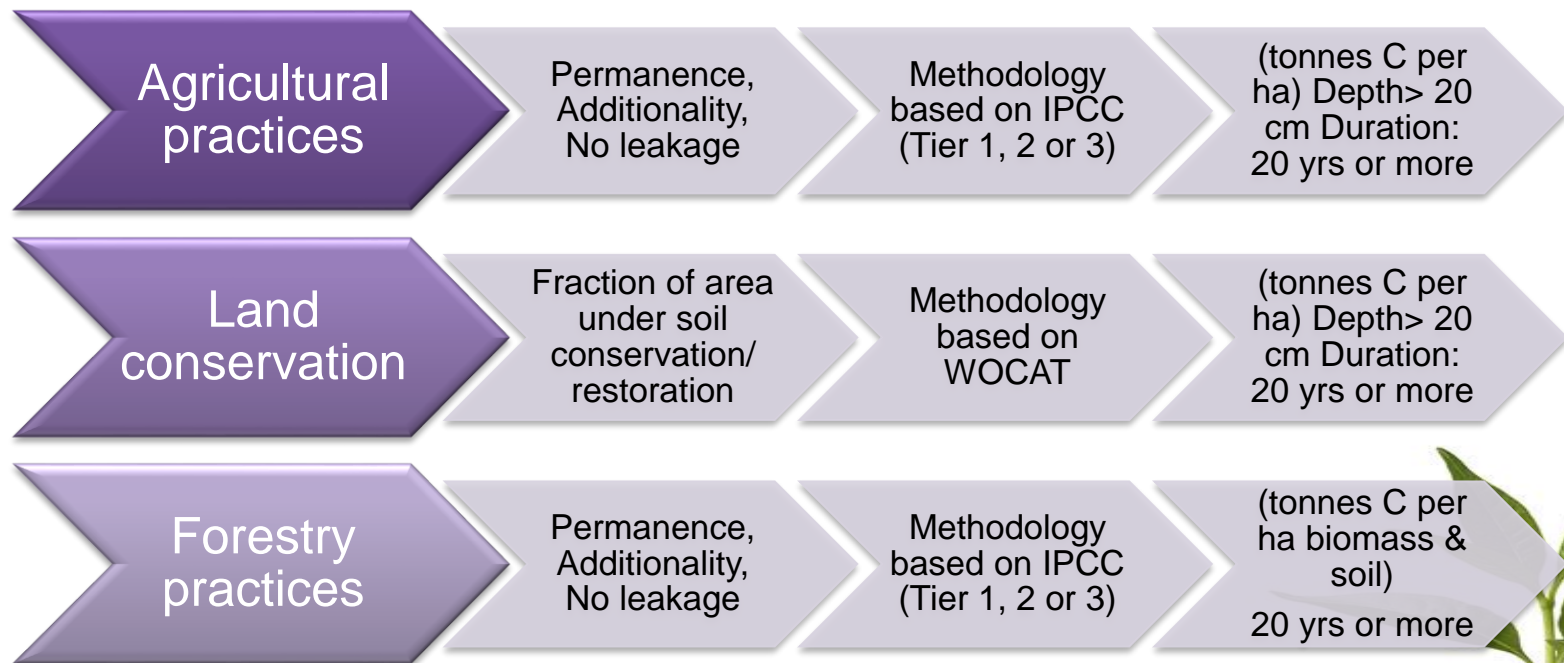
Adaptation
(yield variability,
resilience to
extremes, water
resources)

Mitigation (non CO₂
GHGs, fossil energy
use)



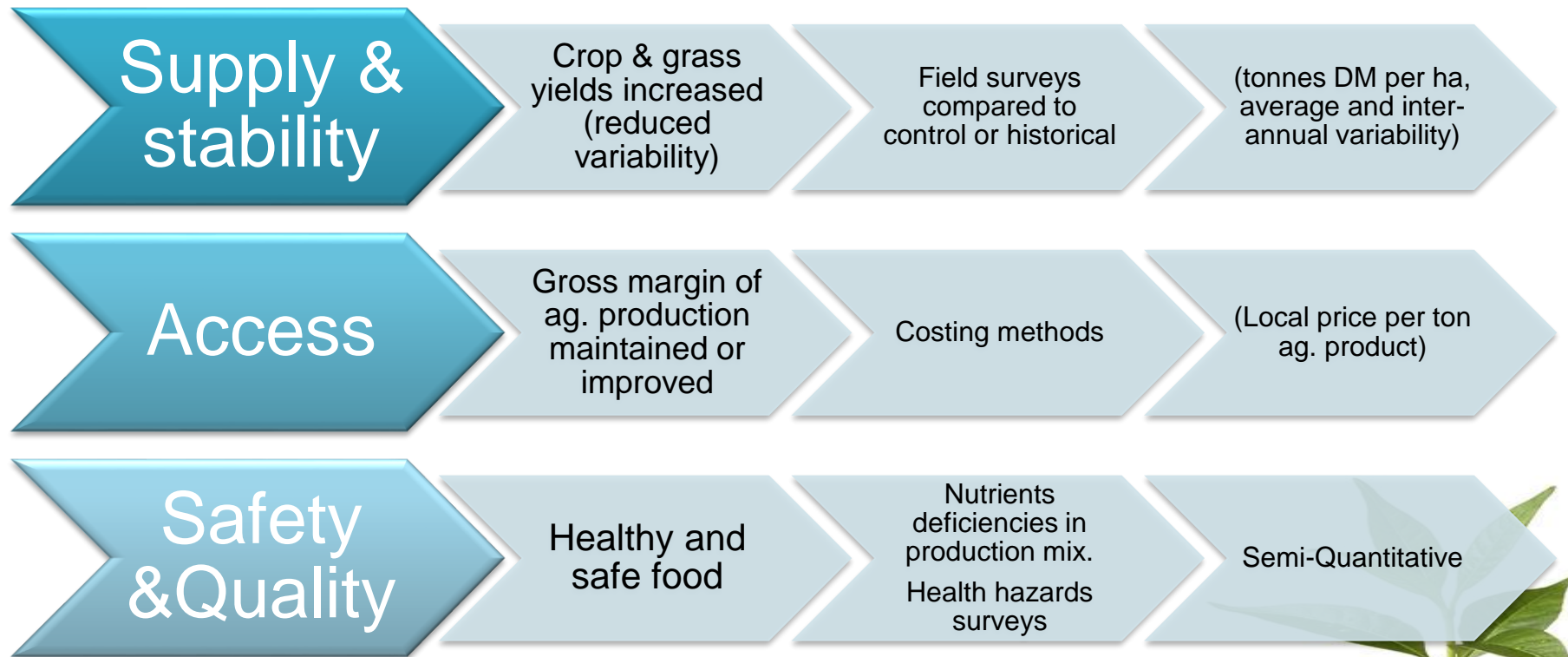
Criteria, indicators, methods and units

Soil carbon and land conservation or restoration



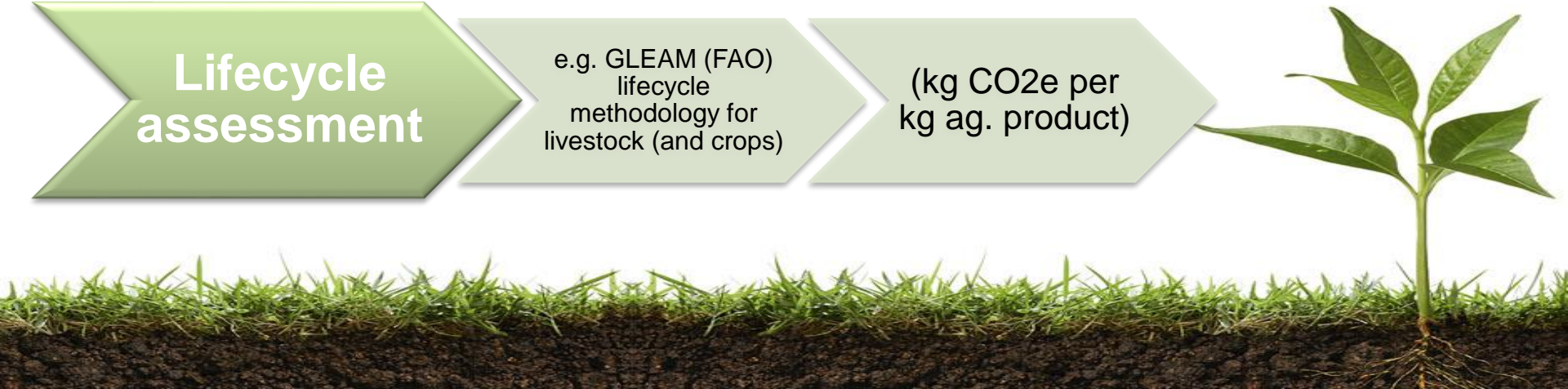
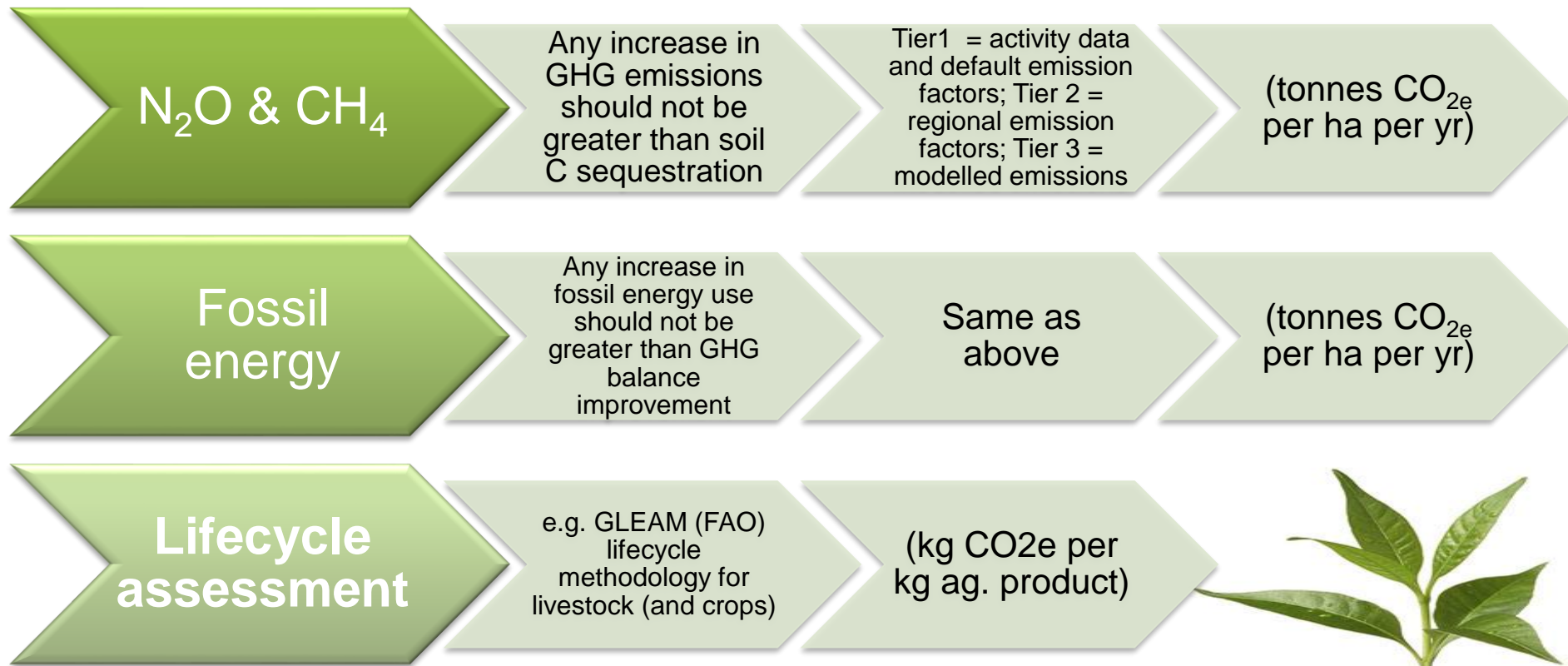
Criteria, indicators, methods and units

Food security



Criteria, indicators, methods and units

Mitigation



Criteria, indicators, methods and units

Adaptation

Yield &
animal
production
stability

Reduced
variability (yields,
dairy/meat
production)

Time series
compared to
historical (or
controls)

(inter-annual
production
variability)

Resilience to
extreme
events

Reduced
production losses,
increased
recovery

Surveys,
Insurance
premiums, early
warning

(avoiding losses)

Water
resources

Water table,
stream levels
compared to
historical

Relationships
between water
table, peak
discharge and
rainfall

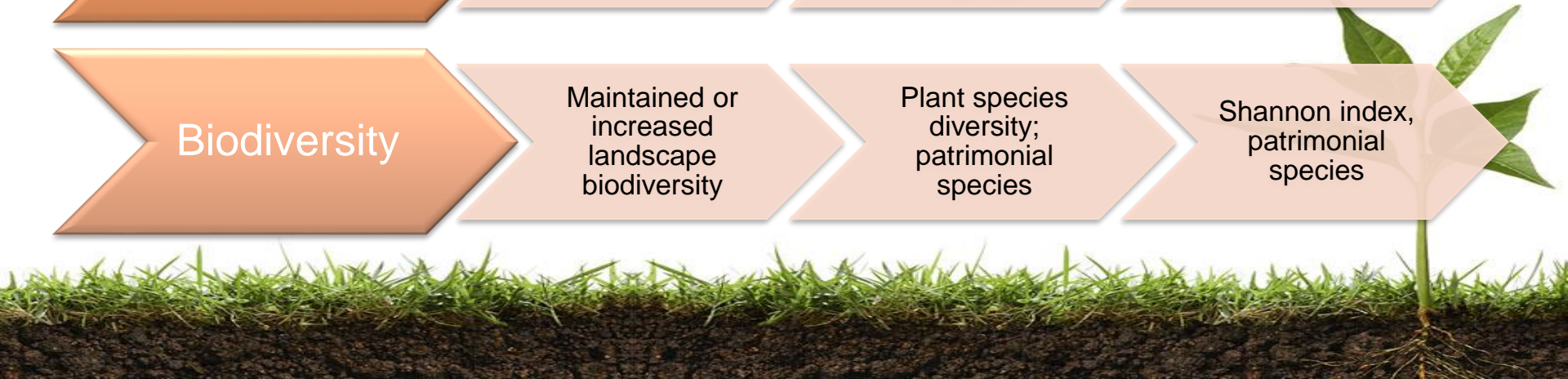
(volume of water)

Biodiversity

Maintained or
increased
landscape
biodiversity

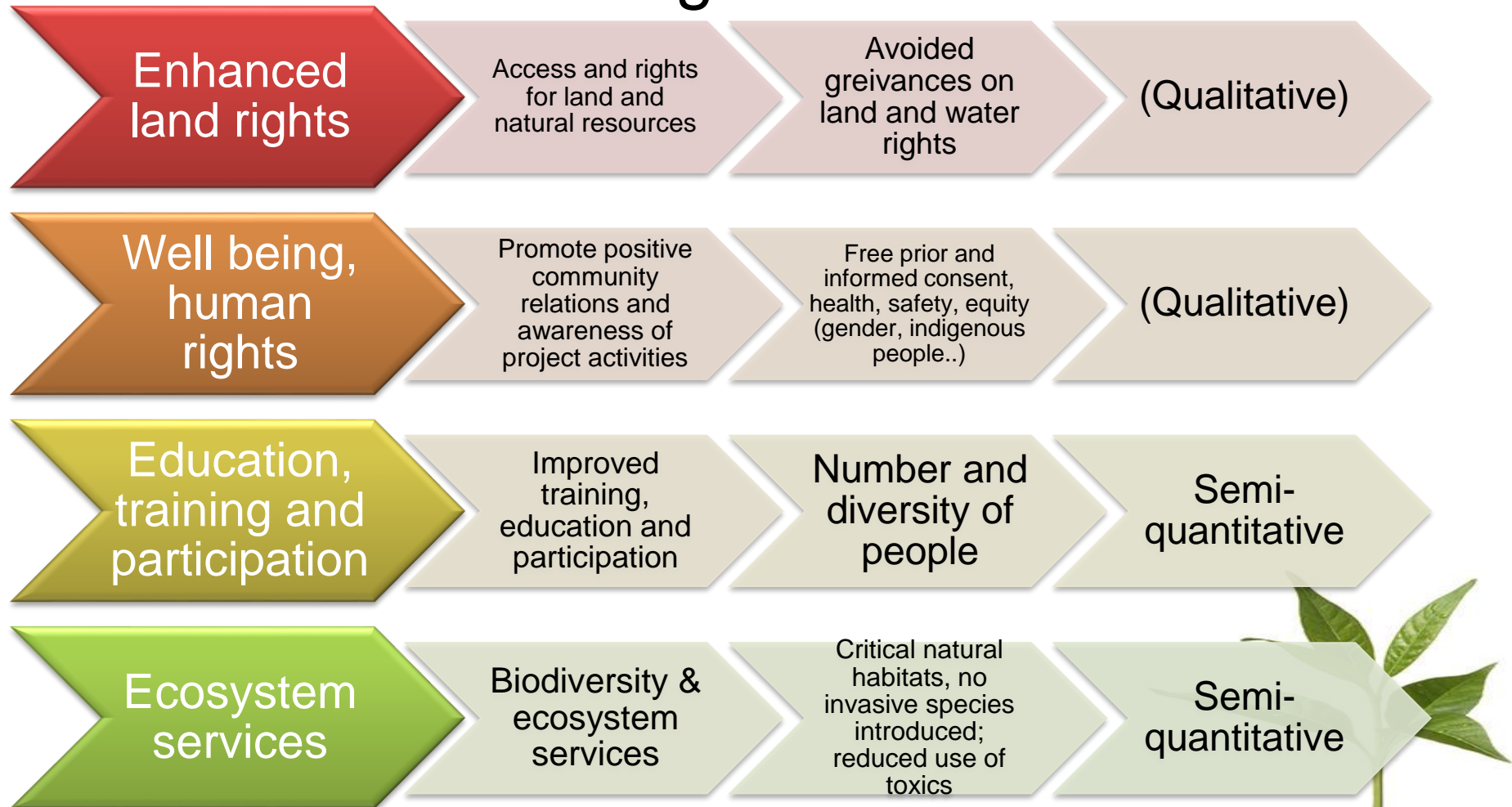
Plant species
diversity;
patrimonial
species

Shannon index,
patrimonial
species



Criteria, indicators, methods and units

Safeguards



Use of the criteria and indicators

- **Provide a formative assessment and evidence-based suggestions for the improvement of projects**
- **It is not a validation process**
- **Possibility for self-assessment: list of criteria/indicators is publicly available (internet)**



Proposed role of the STC in an evaluation procedure

Under request of the consortium, the STC will undertake a formative assesment of projects against the defined criteria and indicators aligned with the SDG targets.

The advice will provide a narrative assessment aimed at improving the quality of the project.

The quality of the advice will depend on the quality of the information provided by the project.



The project evaluation procedure

Code of Conduct

Each evaluation will be undertaken using a specified and comprehensive Code of Conduct, consistent with the Terms of Reference for the STC, precisising the responsibilities of the Secretariat and the STC; avoiding conflicts of interests.





Montpellier 29th & 30th June 2017 – 2nd CONSORTIUM of MEMBERS

Thank you for your attention!

