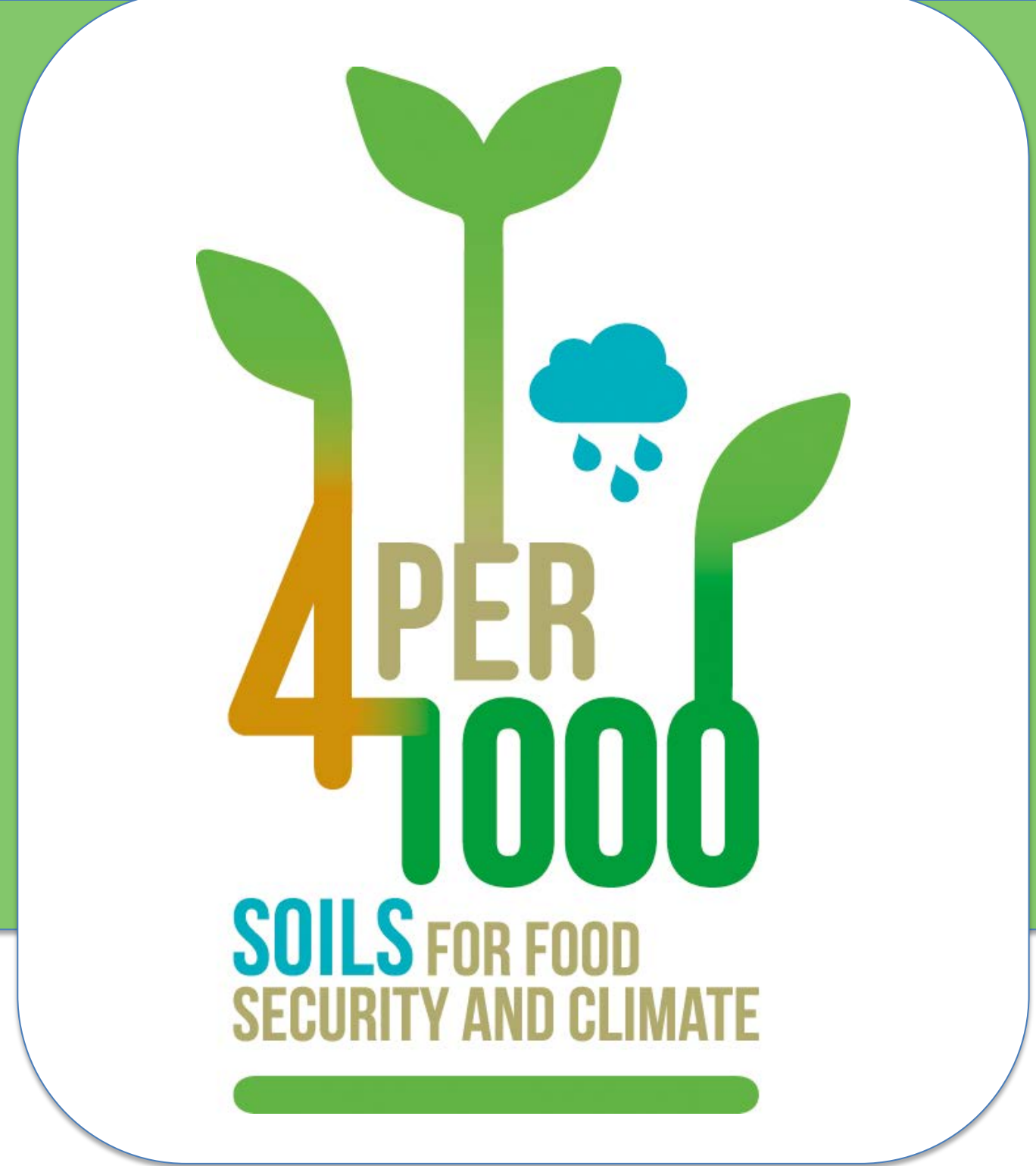




Low carbon dairy and beef farms



Implementation of carbon mitigation action plans in dairy and beef farms

The project is aiming to reduce milk and beef carbon footprints by 20% over 10 years in France, Ireland, Spain and Italy.

Carbon footprint (kg CO ₂ /kg milk-beef)	2015	2025
Milk	1 (a)	0.8
Beef	14.3 (b)	11.5

(a) : Brocas et al, 2016
(b) : Dollé et al, 2015

❑ A voluntary carbon action plan

➤ To reduce GHG emissions

By improving herd management (age at first calving, milk and beef yield,...) , feed efficiency (feed component, feed intake,...), forage production (type, quality), manure management (storage, spreading, biogas production,...)

➤ To increase carbon sequestration

By increasing temporary grassland duration, improving grassland management (grazing/cutting, fertilization rate,...), introducing more intermediate crops, hedges,...

❑ A multi-stakeholders partnership

➤ 70 stakeholders engaged and 300 advisers trained

A large number of actors ready to assess environmental burdens in farms

➤ 6,000 farmers involved in the initiative

A carbon assessment and a carbon action plan developed in each farm



Harmonization of methodologies to assess GHG emissions and carbon sequestration in farms

Milk and beef carbon footprint at a European scale

EU multi-stakeholders network involved in increasing livestock sustainability

Partners

Institut de l'Elevage (FRA), CNIEL (FRA), INTERBEV (FRA), TEAGASC (IRL), CREA (ITA), ASOPROVAC (ESP) are leading the initiative in the four countries.

Advisers organizations are responsible for applying the initiative in farms.

Contacts

Jean Baptiste DOLLE
Institut de l'Elevage
France
Jean-baptiste.dolle@idele.fr
www.idele.fr

Thierry Rapin
CNE
France

Thierry GESLAIN
CNIEL
France
www.cniel.com

Caroline GUINOT
INTERBEV
France
www.interbev.fr

Financial support



Initiative 4pour1000

Montpellier
(France)

Juin 2017

